



Product Service

# CERTIFICATE

No. Z1 17 06 22430 048

**Holder of Certificate:** **Alu Rehab AS**  
Bedriftsvegen 23  
4353 Klepp Stasjon  
NORWAY



**Certification Mark:**

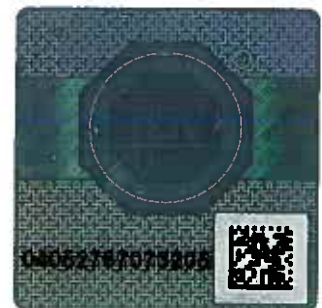


**Product:** **Care wheelchairs**

The product was tested on a voluntary basis and complies with the essential requirements. The certification mark shown above can be affixed on the product. It is not permitted to alter the certification mark in any way. In addition the certification holder must not transfer the certificate to third parties. See also notes overleaf.

**Test report no.:** 713096376

**Valid until:** 2022-06-13



**Date,** 2017-06-16  
Page 1 of 2

  
(Torsten Zimmer)



**CERTIFICATE**  
**No. Z1 17 06 22430 048**

**Model(s):** **Netti Dynamic S**

**Parameters:**

total length incl. footrests:	905 - 1000 mm
total length w/o footrests:	740 - 835 mm
width:	405 - 505 mm
height:	885 mm
seat width:	250, 300 and 350 mm
seat depth:	250 - 350 mm
seat height:	500 mm
backrest height:	420 mm
seat plane angle:	-0° to +35°
backrest angle:	90° to 125°
max. user weight:	75 kg
brake system:	drum brake (assistent brake)
back wheels:	
- size	16 x 13/8"
- tyres	solid rubber (puncture proof)
- adjustable	Yes
- fixation	rigid
front wheels:	
- size	Ø 150 x 28 mm
- tyres	solid rubber (puncture proof)
- adjustable	Yes
- fixation	rigid
frame material:	aluminum/steel
armrest:	height adjustable
legrest:	height adjustable, swing able, and removable
anti tip device:	available

**Tested according to:** EN 12183:2014

**Production Facility(ies):** 57370